

lamp post christmas trees

enjoy a totally green christmas!

Everyone loves seasonal illuminations, they provide pleasure and cheer up any location. The Plantscape® solar powered Christmas Tree with lights offers just that, but with none of the hassle.

Our completely self sufficient trees all come with their own battery pack which charges throughout the day and illuminates your streets at night. Available on a rental only basis, our costs include delivery, placement, a full back up service available 7 days a week and removal at the end of the season.

Weighing no more than your summer floral displays they fit onto our standard Holestar Bracket, which means that no drilling of Lamp-Post or buildings is necessary, and because the lights are solar powered it means not only no increase in your electrical bills, but also no wiring or electrical certification is needed!

Benefits

- Solar powered - comes complete with battery pack, making them completely self sufficient and removing any need for wiring or electrical certification
- All component parts made from re-cycled materials
- Fit onto our standard Holestar brackets – no drilling required!
- Weight is the same as standard hanging basket
- Available for hire only – costs include delivery, placement, a full back up service available 7 days a week and removal
- No cutting down Christmas Trees

Lamp Post Christmas Trees

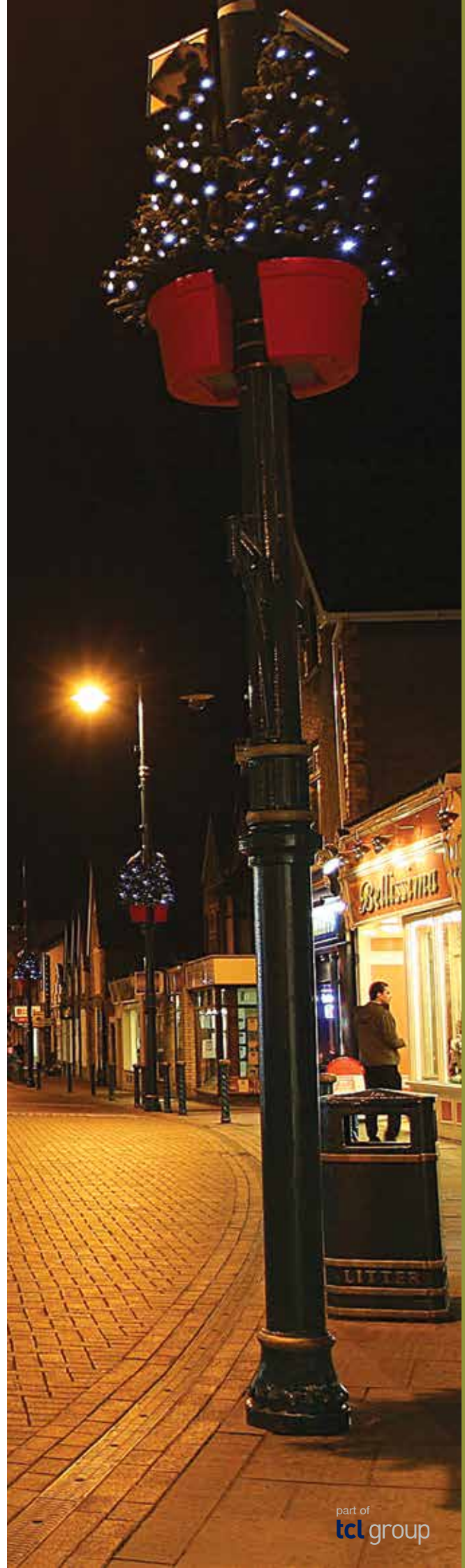


Specification:
• 1400mm x 650mm x 320mm
• Weight: 13kg per half unit

REF: PXT1

Please Note: All measurements are approximate

plantscape



contact us now: 01335 372785 | info@plantscapeuk.com | www.plantscapeuk.com

christmas trees

part of
tcl group